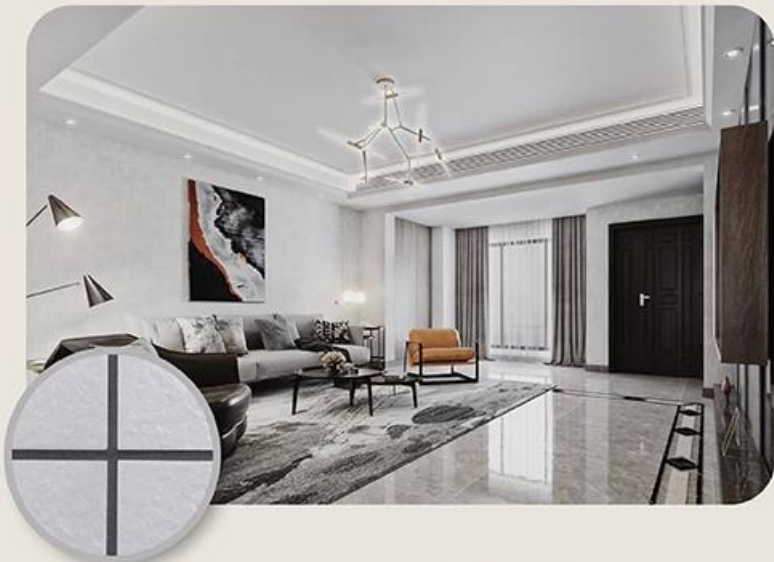


Kelin manne mai d'auke da ruwa shine samfurin karshen muhalli. Matte texture, yana ba ku madaidaiciyar maɓallin keɓaɓɓen kayan ado, kuma haɗin haɗin yana kama da dacewa da tayal yumbu. Iri iri-iri, bari adonku ya haskaka. An yi ta [China tayal grout sealer babban dillali](#). Hanyar gidan ruwa mai amfani da ruwa tana sanya samfurin ya zama muhalli. Sand sandar kasa da aka zana a babban zafin jiki yana sa launi ya zama na halitta da kyau kuma ba ya shudewa. Za'a iya amfani da samfurin mafi kyau a cikin dakunan tayal yumbu, dutse, gilashi, tayal mosaic akan bango ko gari a bandaki, kicin, dakin kwana da sauransu. Samfurin ne aka fi so a cikin adon iyali, yana kara ion oxygen mara kyau don tsarkake iska. Ostiraliya haɗin haɗin gwiwa da samfuran ci gaba don haɓaka aiki mafi kyau, kuma ta hanyar Kwalejin Kwalejin Kimiyya ta China dabarun kula da ingancin ingancin, don sa samfuran su zama masu inganci.



**Iri launuka don zaɓin ku. Hakanan samar da launuka na al'ada.**

- Off White
- Gainsboro
- Grayish
- Medium Gray
- Dull Gray
- Silver Gray
- Metal Gray
- Starry Gray
- Luxury Gray
- Slate Gray
- Greyish Green
- Yellow Gray
- Brownness
- Terra Brown
- Glacier White
- Calaeatta
- Pearl Gold
- Primrose Yellow
- Shiny Gold
- Buff Beige
- Grayish Yellow
- Yellowish Brown
- Soft Khaki
- Olive Brown
- Brown
- Reddish Brown
- Dark Brown
- Rock Black

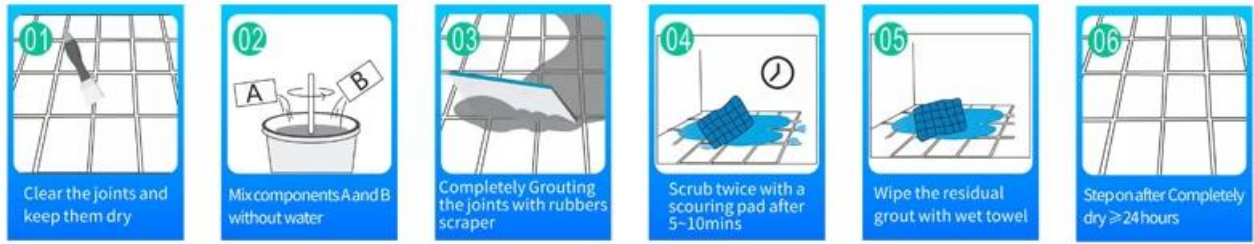


Bayar da Maganin Tazarar Duka Gabafaya



**Takaitaccen Tsarin Ginawa**

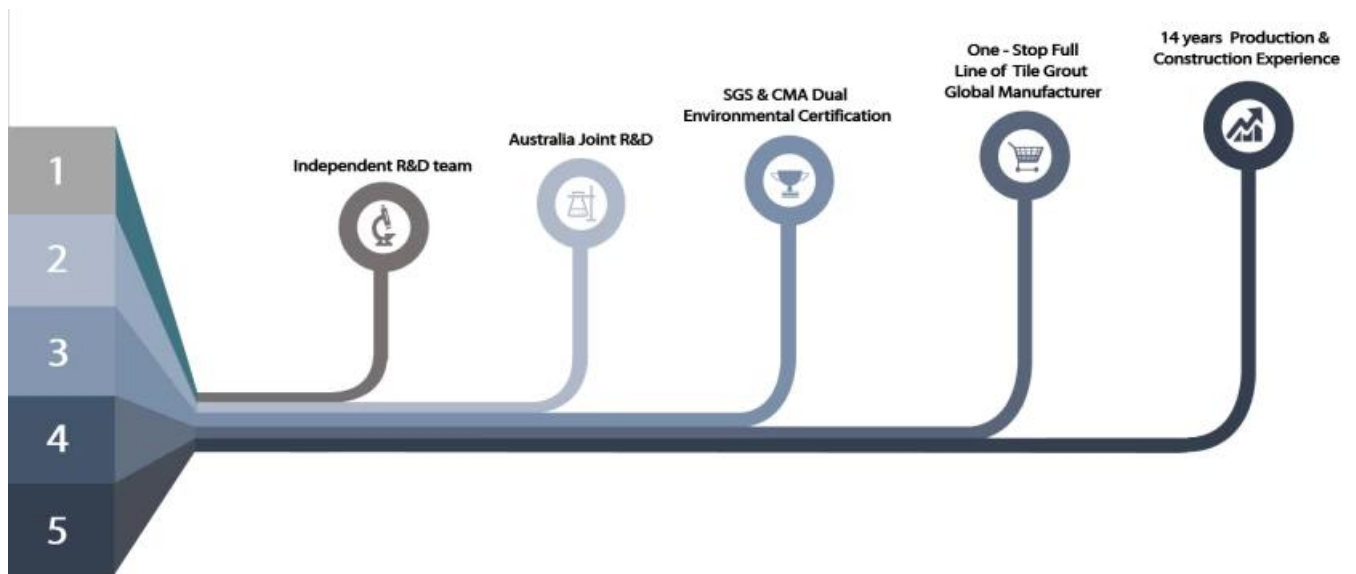




### Kwararriyar Matsa Haɗin gwiwa



### Amfanin Kamfanin



## Bayanin Masana'antu



Layin Na'urar Yin Kuka



Injin gwaji



Layi Production Line



Sanyin Filing



Ciko Layin Na'ura



Injin da aka saka fim



Hakikanin Haja



Haja

## Takardar shaida

